

Attitude: The motor can be operated in all positions.  
 Maximum temperature -20°C to +80°C (-4°F to +176°F).  
 Muffler supplied with motor.

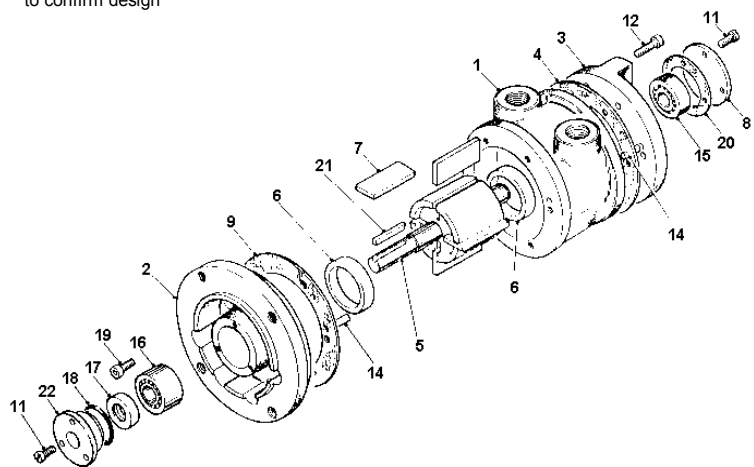
Max. Overhung Force on shaft 300 N (70 lbf.).  
 Axial loads should be kept to a minimum.  
 Mass 10.00 kg (22.04 lb.).

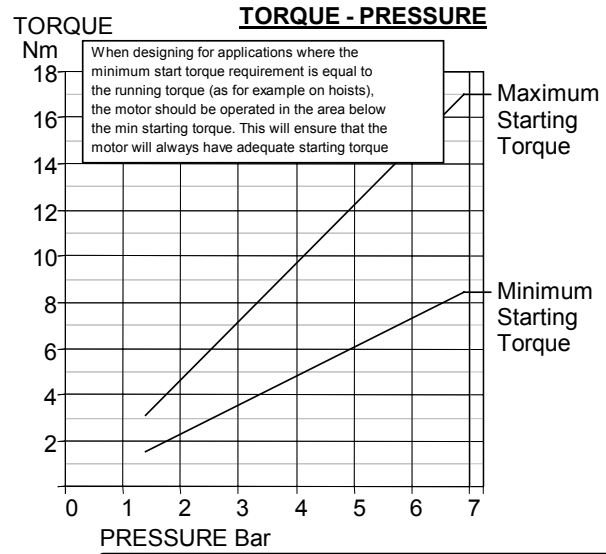
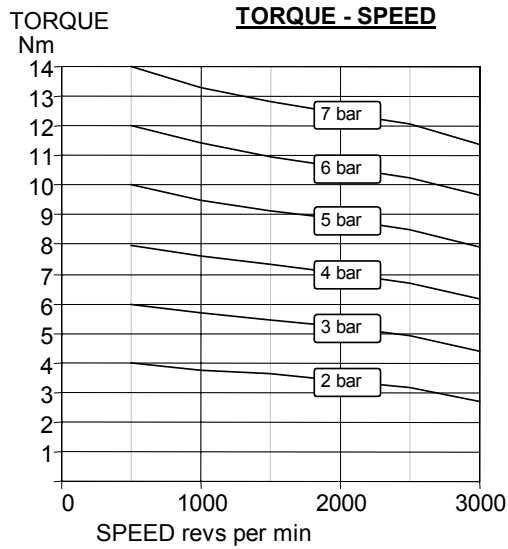
**Note: With air inlet at port 'A',  
 rotation is clockwise looking on shaft.  
 For opposite rotation reverse ports.**

## Exploded view with spare parts list

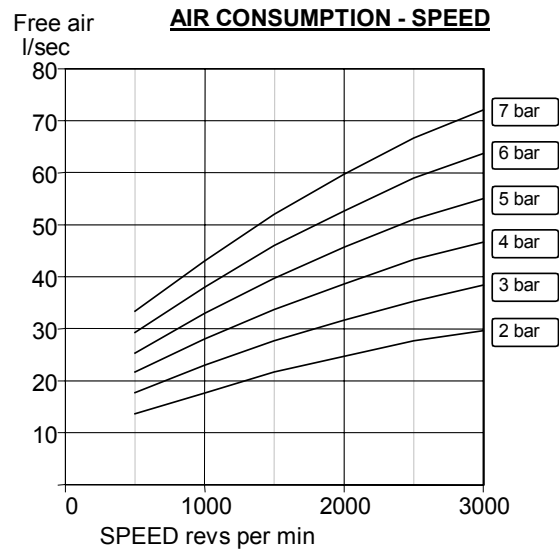
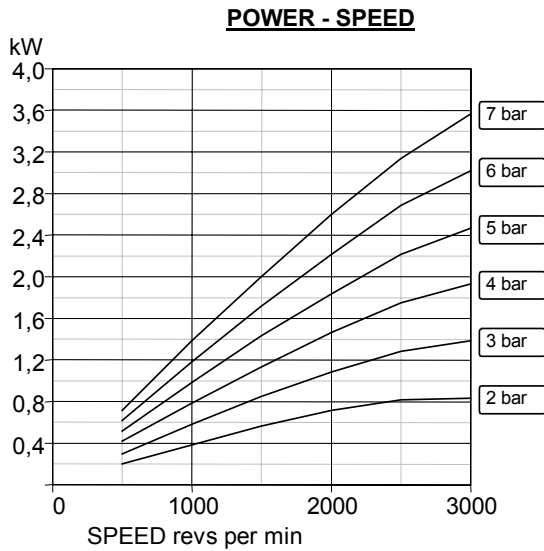
Item	Part No.	Description	Qty	Kit No.
01	760-001	Body BSP	1	
02	760-018	Front Plate NEMA 56C	1	
03	760-002	End Plate	1	
04	-	Gasket	2	769-910
05	760-911	Rotor Shaft Assy	1	
06	760-006	Ejection Ring	2	
07	-	Blades	4	769-910
08	760-008	Cover Plate	1	
09-1	-	Gasket	1	769-910
09-2	-	Gasket	1	769-910
09-3	-	Gasket	1	769-910
11	805-006	Screw	6	
12	809-009	Cap Screw	6	
14	806-024	Dowel	4	
15	807-028	Bearing	1	
16	807-025	Bearing	1	
17	-	Oil Seal	1	769-910
18	-	O Ring	1	769-910
19	809-007	Capscrew	6	
20	-	Gasket	1	769-910
21	811-020	Key	1	
22	760-007	Seal Housing	1	
	769-910	V6 Seal Kit		
	820-025	Silencer 3/4 BSP	1	

If unit is pre 1990 supply consult manufacturer to confirm design





A pressure regulator should be used to control the air pressure to the motor, to limit the maximum output torque applied to the driven assembly.



Muffler supplied with motor.  
Motor is reversible.

Attitude: The motor can be operated in all positions.  
Maximum temperature -20°C to +80°C (-4°F to +176°F).

Max. Overhung Force on motor shaft 300 N (70 lbf.).  
Axial loads should be kept to a minimum.

**AIRLINE FILTRATION AND LUBRICATION**

Use 64 micron filtration or better. Choose a lubricator suitable for the flow required. Prior to initial start-up, inject oil into the inlet port.

Lubricator drop rate 5-6 drops/minute continuous operation.  
Lubricator drop rate 10-12 drops/minute intermittent operation.

**Maximum continuous speed 3000 rpm**