

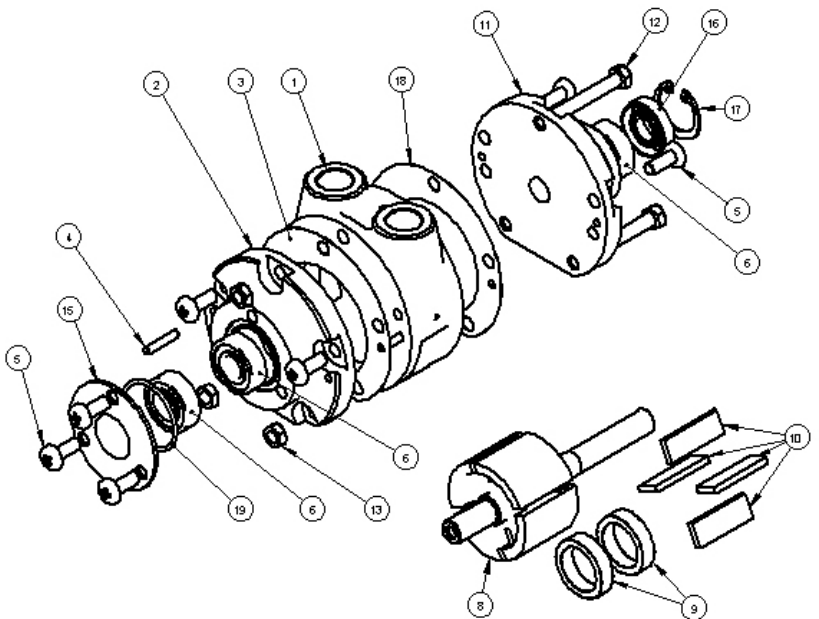
Attitude: The motor can be operated in all positions.  
Maximum temperature -20°C to +80°C (-4°F to +176°F).

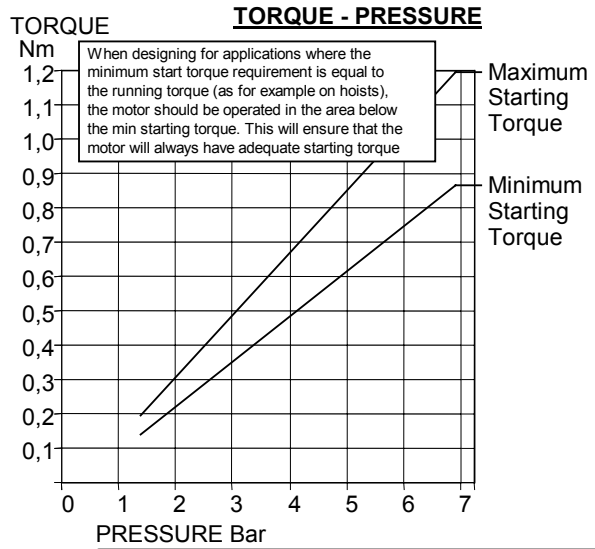
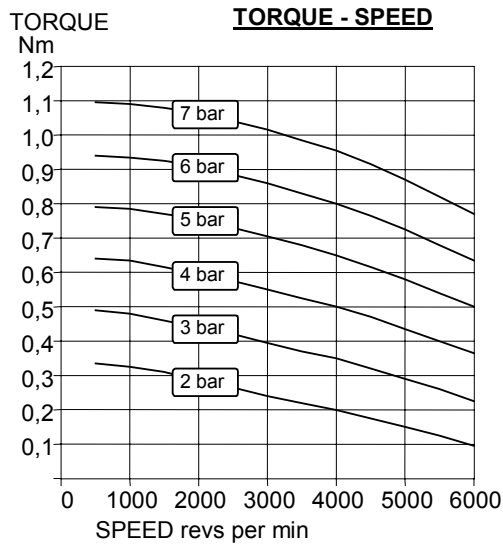
Max. Overhung Force on shaft 18 N (4.0 lbf.).  
Axial loads should be kept to a minimum.

Mass 1.3 kg

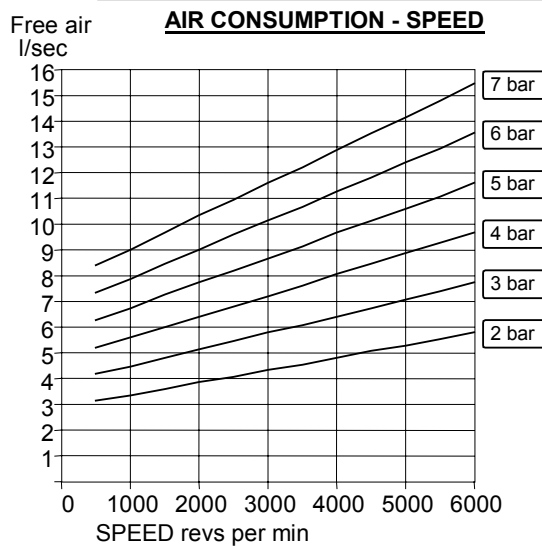
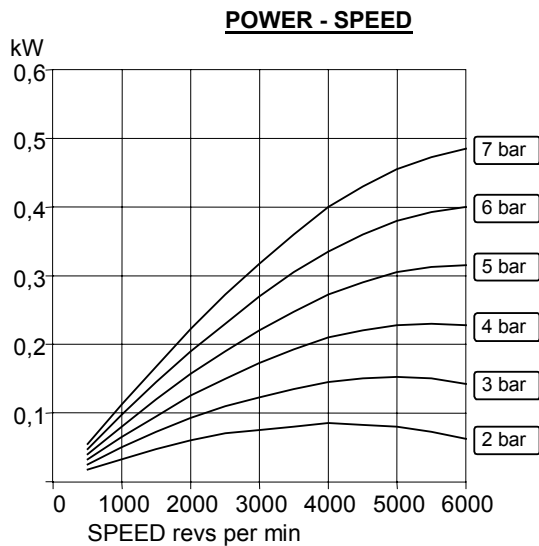
## Exploded view with spare parts list

Item	Part No.	Description	Qty	Kit No.
01	710-001	Body NPT	1	
02	710-002	Rear Cover	1	
03		Gasket	1	719-910
04	806-009	Dowel Pin	4	
05	805-050	Screw	7	
06	807-053	Bearing	3	
08	710-911	Rotor Shaft	1	
09	710-006	Ejection Ring	2	
10		Blade	4	719-910
11	710-003	Front Cover	1	
12	802-700	Bolt M5 x 40	3	
13	801-700	Nut M5	3	
15	710-008	End Plate	1	
16		Shaft Seal	1	719-910
17		Circlip	1	719-910
18		Gasket	1	719-910
19		O-ring	1	719-910





A pressure regulator should be used to control the air pressure to the motor, to limit the maximum output torque applied to the driven assembly.



Muffler supplied with motor.  
Motor is reversible.

Attitude: The motor can be operated in all positions.  
Maximum temperature -20°C to +80°C (-4°F to +176°F).

Max. Overhung Force on motor shaft 18 N (4.0 lbf.).  
Axial loads should be kept to a minimum.

**AIRLINE FILTRATION AND LUBRICATION**

Use 64 micron filtration or better. Choose a lubricator suitable for the flow required. Prior to initial start-up, inject oil into the inlet port.  
Lubricator drop rate 4-5 drops/minute continuous operation.  
Lubricator drop rate 9-12 drops/minute intermittent operation.

**Maximum continuous speed 6000 rpm**