

MacScott Bond LTD

Fluid Power Engineers

Tel: +44 (0)131 448 2950 | Fax: +44 (0)131 448 2941

Member of the Mactaggart Scott Group

Hunter Avenue

Loanhead

Midlothian

EH20 9SW

VAT NO: 271 2904 69

Email: enquiries@macscott.com

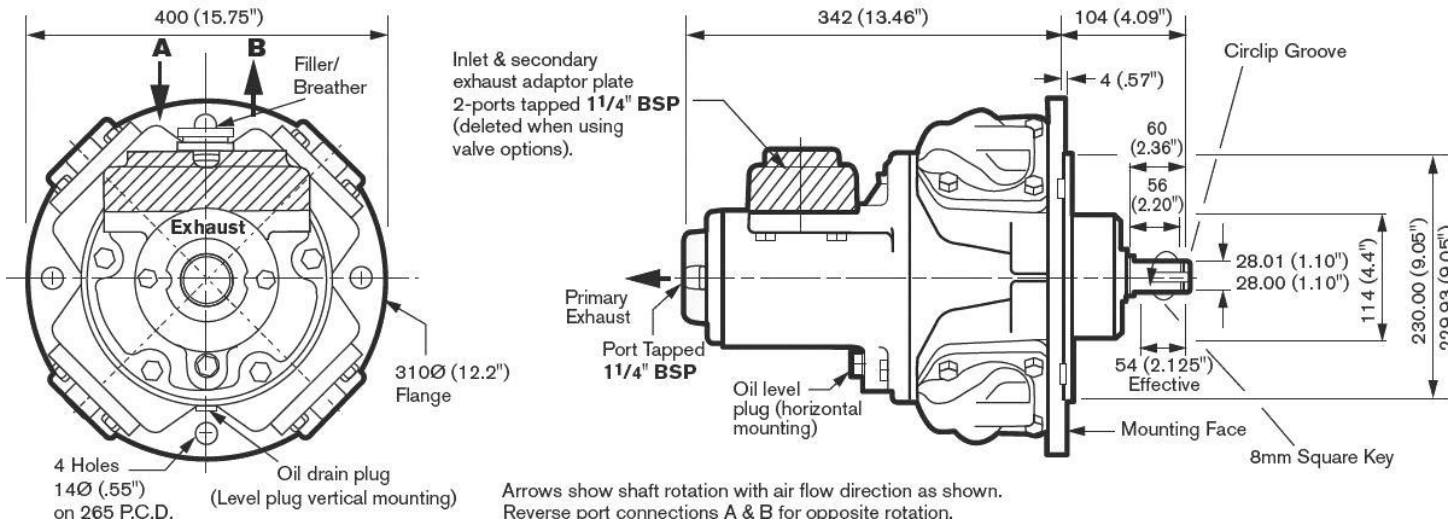
RM410 Radial Piston Motor

RM410 = 14kW, 19HP - R43

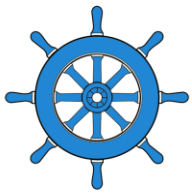
Mass (Motor Only)	137 lbs / 62 kgs
Moment of Inertia of rotating parts	14 lb.in ² / 4.1 gm ² (motor only)
Max Overhung Force on motor shaft	300 lbf. / 1330 N
Temperature Range	-4°F to +176°F / -20°C to +80°C

Lubricating Oil Capacities - Horizontal 18 fl. oz. / 500 ml, Vertical 33 fl. oz. / 940 ml. Use a good quality hydraulic oil with a viscosity of around 460SSU (100cSt) at 104°F / 40°C.

Airline Filtration and Lubrication - Use 64 micron filtration or better. Choose a lubricator suitable for the flow required. Prior to initial start-up, inject oil into the inlet port. Lubricator drop rate: 3-4 drops/minute continuous operation. Lubrication drop rate 6-10 drop



	Length		Width		Height	
	(in.)	(mm.)	(in.)	(mm.)	(in.)	(mm.)
RM410	17.55	446	15.75	400	15.75	400



MacScott Bond LTD

Fluid Power Engineers

Tel: +44 (0)131 448 2950 | Fax: +44 (0)131 448 2941

Member of the Mactaggart Scott Group

Hunter Avenue

Loanhead

Midlothian

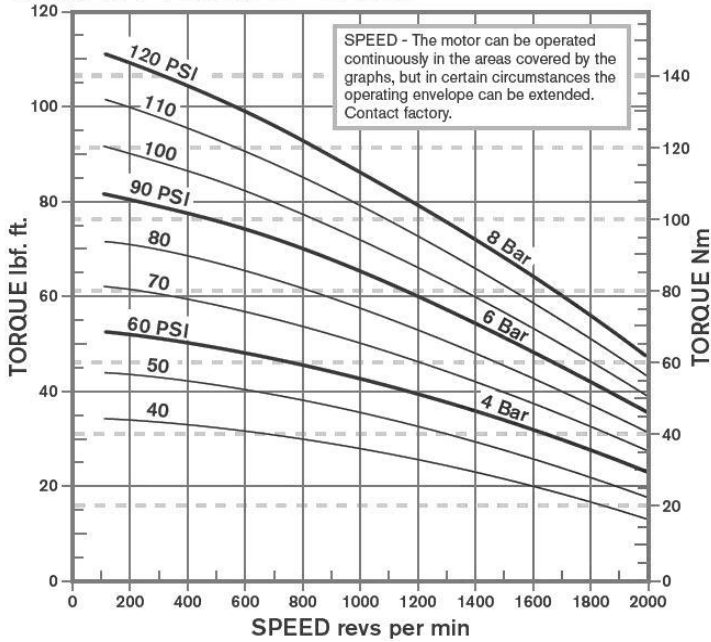
EH20 9SW

VAT NO: 271 2904 69

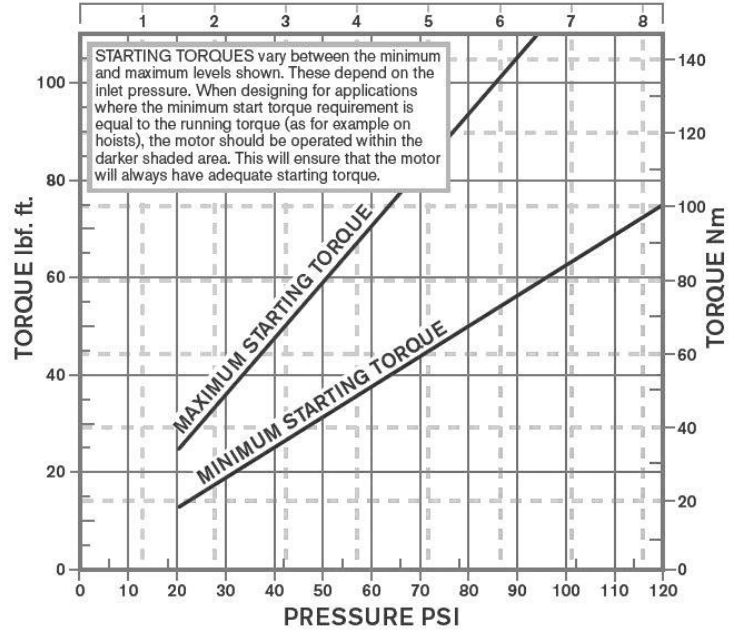
Email: enquiries@macscott.com

Reading Graphs - Scales have been adjusted to enable bar and psi to be read from a common curve. Therefore only read psi with the left hand axis and bar with the right hand axis.

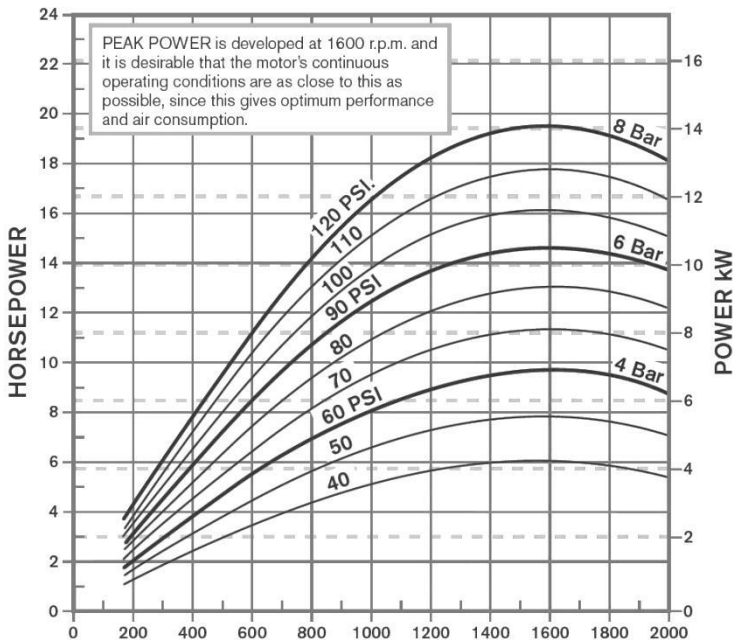
GRAPH 1 TORQUE - SPEED



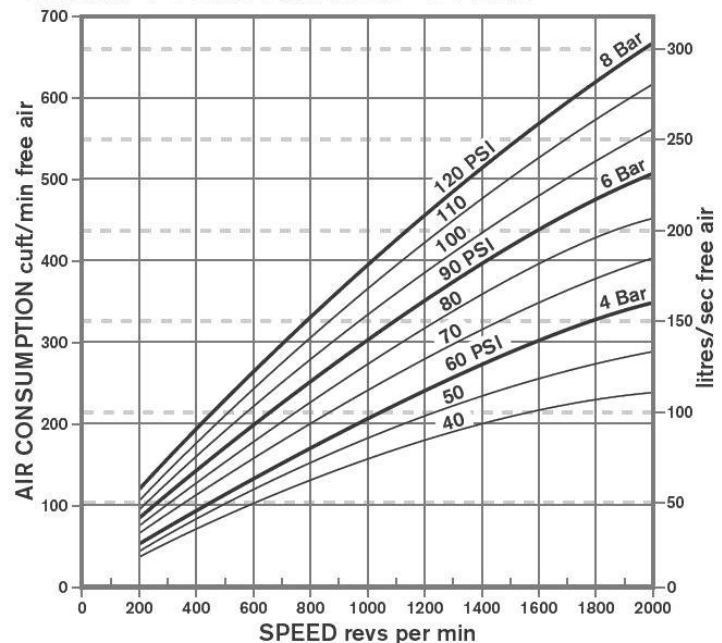
GRAPH 2 STARTING TORQUE - PRESSURE

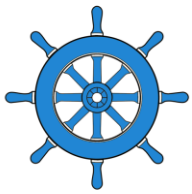


GRAPH 3 POWER - SPEED



GRAPH 4 CONSUMPTION - SPEED





MacScott Bond LTD

Fluid Power Engineers

Tel: +44 (0)131 448 2950 | Fax: +44 (0)131 448 2941

Member of the Mactaggart Scott Group

Hunter Avenue

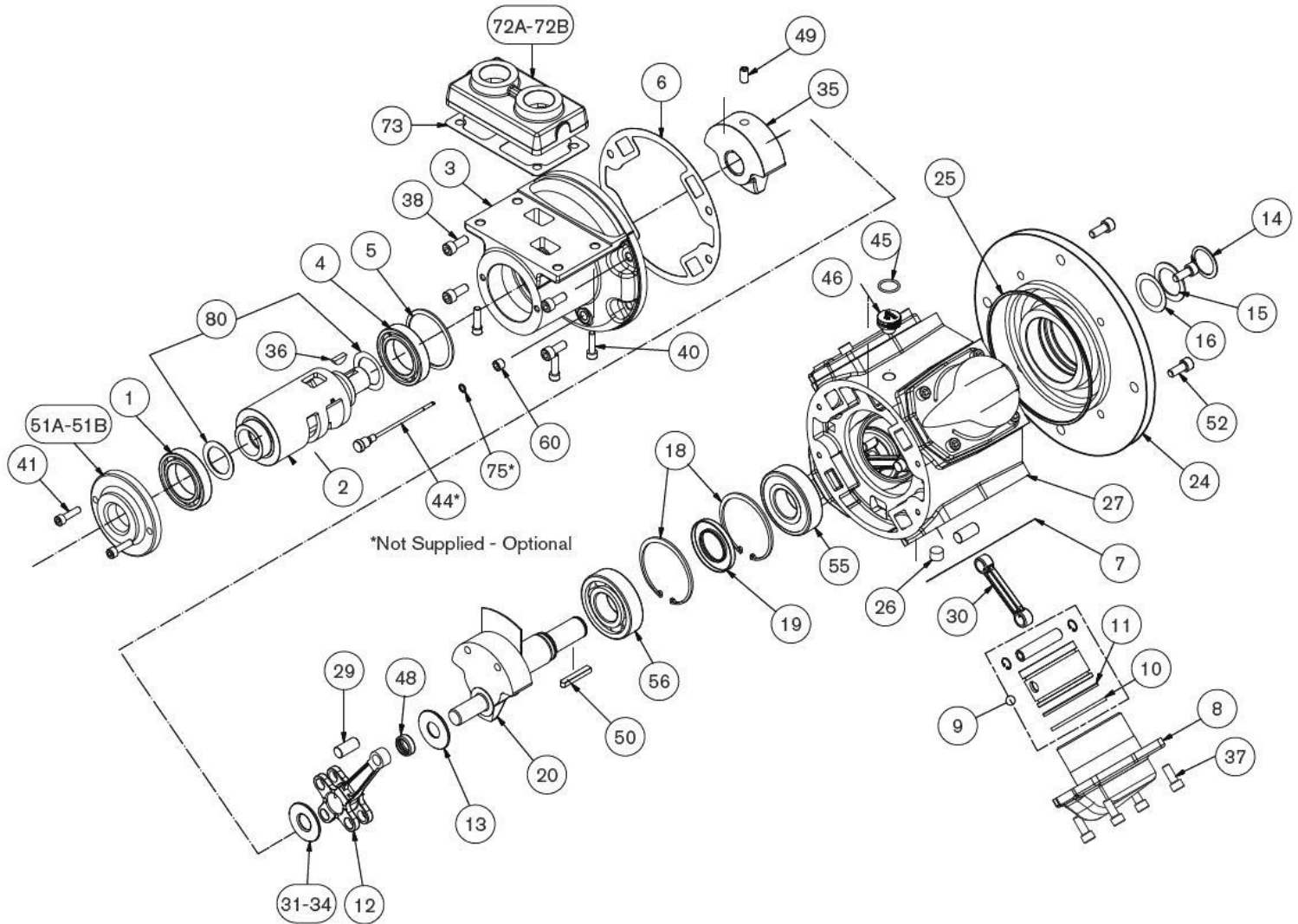
Loanhead

Midlothian

EH20 9SW

VAT NO: 271 2904 69

Email: enquiries@macscott.com



ITEM	PART NO.	DESCRIPTION	QTY.	KIT NO.
1	807-006	Rotary Valve Bearing (Outer)	1	
2	430-006	Rotary Valve	1	
3	430-011	Rotary Valve Housing	1	
4	807-005	Rotary Valve Bearing (Inner)	1	
5	804-066	Rotary Valve Bearing Circlip	1	
6	430-001	Rotary Valve Housing Gasket	1*	439-910
7	430-030	Cylinder Gasket	4*	439-910
8	430-082	Cylinder	4	
9	430-902A	Piston Assembly	4	
10	430-024	Compression Ring	4*	439-910
11	430-022	Oil Control Ring	4*	439-910
12	430-077	King Rod	1	
13	430-053	Crankshaft Spacer	2	
14	804-016	Crankshaft Circlip	1	
15	430-035	Crankshaft Spacer	1	
16	430-049	Crankshaft Spacer Shim	5	
18	804-068	Crankshaft Bearing Circlip	2	
19	808-048	Crankshaft Oilseal	1*	439-910
20	430-901	Std. Crankshaft Assembly	1	
24A	430-076	Std. Flange Plate	1	
24B	430-097	SAE Flange Plate	1	
25	808-018	Flange Plate Seal	1*	439-910
26	816-071	Plug	1	
27	430-012	Engine Case	1	
29	430-081	Queen Rod Pivot	3	
30	430-078	Queen Rod	3	
31	430-052	Crank Spacer SELECT	1	
32	430-053	Crank Spacer ON	1	
33	430-054	Crank Spacer ASSEMBLY	1	

ITEM	PART NO.	DESCRIPTION	QTY.	KIT NO.
35	430-010	Balance Weight	1	
36	811-009	Woodruff Key	1	
37	802-054	Cylinder Bolts	16	
38	802-054	Valve Housing Bolts	4	
40	802-054	Adaptor Plate Bolt	4	
41	802-033	Exhaust Cover Bolts	2	
45	808-004	Seal (transit only)	1	
46	130-066	Breather Plug	1	
47	430-083	Oil Seal Carrier	1	
48	807-045	Needle Bearing	2	
49	815-003	Grub Screw	1	
50	811-005	Key	1	
51A	430-005	Rotary Valve Exhaust Cover BSP	1	
51B	430-105	Rotary Valve Exhaust Cover NPT	1	
52	809-001	Flange Bolts	8	
55	807-013	Output Shaft Brg. (Outer)	1	
56	807-012	Output Shaft Brg. (Inner)	1	
60	816-074	Oil Level Plug	1	
72A	430-003	Inlet Adaptor Plate BSP	1	
72B	430-103	Inlet Adaptor Plate NPT	1	
73	430-004	Inlet Adaptor Plate Gasket	1*	439-910
		Seal Kit	1	439-910

Please note item 439-910 (Seal Kit) includes all items marked thus:*
Items marked thus select on assembly.