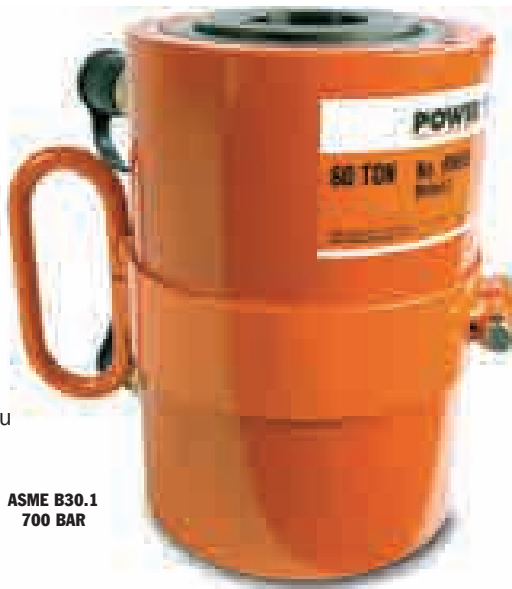


# Center Hole CYLINDERS RH SERIES

## 30-200 Ton Double-Acting

Ideal for pulling and  
tensioning of cables, anchor  
bolts, forcing screws.

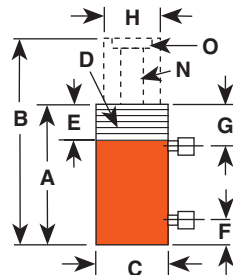
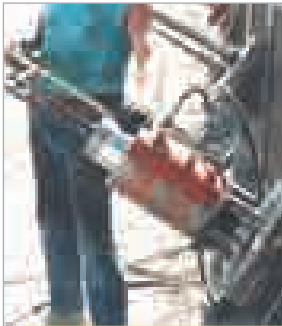


ASME B30.1  
700 BAR

- Interchangeable piston head inserts (see page 41) provide versatility of application.
- Built-in safety feature prevents over-pressurization of the retract circuit.
- Plated piston rod resists wear; superior packings provide high cycle life without leakage.
- Corrosion-resistant standpipe has "Power Tech" treatment (see page 8).
- Each cylinder has 9796 3/8" NPTF female half couplers. The 60 ton thru 200 ton steel models are equipped with removable carrying handles.



CYLINDERS



Cyl. Cap. (tons)	Stroke (mm)	Order No.	Oil Cap. (cm <sup>3</sup> )		A Re-tracted Height (mm)	B Ex-tended Height (mm)	C Outside Dia. (mm)	D Collar Thread (in.)	E Collar Thread Length (mm)	F Base to Top Port (mm)	G Cylinder to Piston Rod Dia. (mm)	H Center Hole Dia. (mm)	N Thread Size (in.)	O Insert	Mounting Holes (in.) and Bolt Circle (mm)	Cylinder Effective Area (cm <sup>2</sup> )		Metric Tons at 700 bar		Weight (kg)	
			Push	Pull												Push	Pull	Push	Pull		
30	15	76.2	RH303	289	167	179.4	255.6	120.7	-	-	25.4	41.3	63.5	32.5	2-12	<sup>3</sup> / <sub>16</sub> -16 x 92.1	38.0	21.8	26.8	15.3	13.5
30	15	152.4	RH306D	580	333	281.0	433.4	120.7	-	-	25.4	41.3	63.5	32.5	2-12	<sup>7</sup> / <sub>16</sub> -20 x 92.1	38.0	21.8	26.8	15.3	20.4
30	20	257.2	RH3010	1.082	672	438.2	695.3	114.3	4 <sup>1</sup> / <sub>2</sub> -12	41	44.5	81.0	60.3	33.3	1 <sup>7</sup> / <sub>8</sub> -16	-	42.2	26.1	29.7	18.3	27.7
60	25	101.6	RHA604D	807	338	241.3	342.9	177.8	-	-	39.7	57.2	101.6	54.0	3-12	<sup>1</sup> / <sub>2</sub> -13 x 130.2	79.4	33.2	55.8	25.1	16.2
60	25	127.0	RH605*	1.009	423	241.3	368.3	165.9	-	-	25.4	44.5	101.6	54.0	3-12	<sup>1</sup> / <sub>2</sub> -13 x 130.2	79.4	33.2	55.8	25.1	33.1
60	40	257.2	RH6010*	2.181	1.427	458.8	716.0	158.8	6 <sup>1</sup> / <sub>2</sub> -12	47.6	54.0	81.8	92.1	54.4	3-16	-	84.8	55.4	59.6	38.9	54.5
100	45	38.1	RH1001*	526	233	165.1	203.2	212.7	-	-	31.8	58.7	127.0	79.8	4-16	<sup>5</sup> / <sub>8</sub> -11 x 177.8	138.0	60.8	97.0	42.7	38.6
100	50	152.4	RH1006*	1.971	1.076	314.3	466.7	184.2	-	-	37.3	59.1	111.1	52.4	4-16	<sup>1</sup> / <sub>2</sub> -13 x 139.7	129.2	70.5	90.8	49.6	43.1
100	45	257.2	RH10010*	3.552	1.556	495.3	752.5	215.9	8 <sup>1</sup> / <sub>2</sub> -12	57	63.5	91.7	139.7	79.8	4 <sup>1</sup> / <sub>2</sub> -12	-	138.0	60.8	97.0	42.7	109.0
150	70	127.0	RH1505*	2.475	1.207	311.2†	438.2	215.9	-	-	37.3	68.3	139.7	65.1	-	-	194.1	94.8	136.9	66.8	67.2
150	75	203.2	RH1508*	3.929	2.086	349.3	552.5	247.7	-	-	39.3	61.1	152.4	80.2	5-12	-	193.2	102.6	135.9	72.1	103.1
200	75	203.2	RH2008*	5.307	2.093	408.0	611.2	273.1	-	-	57.2	81.8	190.5	103.2	6-12	1 <sup>1</sup> / <sub>4</sub> -12 x 198.1	260.9	102.9	183.5	72.4	142.0

\* Supplied with carrying handles.

† Measured with 19 mm high serrated insert installed.  
See pages 36-41 & 120-133 for hydraulic accessories.

Aluminum