

## Get maximum productivity from your tools

*Atlas Copco air preparation units are designed to help you get maximum productivity from your tools. They ensure minimal pressure drop and thus minimum energy losses in the air distribution system, benefiting the environment and cutting your operating costs. The lifetimes of your tools will be extended by using air preparation units and with that comes lower repair costs and less downtime.*

*A correct air installation ensures productivity and good total economy.*

### **FILTER – FIL**

Water and dirt in your compressed air system will cause extensive corrosion damage and wear.

#### **Productivity**

Atlas Copco filters are equipped with a cyclone system. Using centrifugal force, this separates out a high percentage of the heavier solid water particles, while the filter ensures that the amount of dirt entering your tool is kept to a minimum. This means longer working cycles for the tools and minimum service time.

### **REGULATOR – REG**

Atlas Copco regulators ensure optimal flow at the specific flow rates required by Atlas Copco tools, or any other pneumatic tools.

#### **Energy efficiency**

By installing a regulator you will ensure that there will not be any unnecessary consumption of compressed air. The regulators reduce a variable primary pressure to a practically constant secondary pressure with a minimum of pressure drop.

#### **Productivity**

The regulator will optimize the performance of your tool, ensure torque accuracy and boost productivity.

### **LUBRICATOR – DIM**

Atlas Copco oil lubricators ensure a long, efficient and trouble-free life for your pneumatic tools and components.

#### **Productivity**

The use of a lubricator will increase the power in vane motors by about 10-15%.

#### **Energy efficiency**

With the use of a lubricator you will prolong the lifetime of a vane motor up to three times and the motor will work much more efficiently, and with less friction.



Filter – FIL



Regulator – REG



Lubricator – DIM

Air preparation unit MINI-K's main application is to prepare the air for pneumatic components. MINI-K units have a 1/4" BSP connection thread, a composite housing made of polyamide 66 and the bowls are made of polycarbonate.

**WORKING TEMPERATURE**

0°C to +50°C at 10 bar

**OPERATING PRESSURE**

Inlet pressure 0-10 bar  
Outlet pressure 0.5-8 bar

**STANDARD FILTER**

30 µm

**PRESSURE GAUGE**

1/8" BSP



Model	Economical air flow l/s	Maximum air flow l/s	Bowl	Filter condensate drainage	Max condensate capacity cm <sup>3</sup>	Max oil capacity cm <sup>3</sup>	Weight kg	Ordering No.
<b>Filters</b>								
MINI FIL 08K-B	12	30	Polycarbonate	Manual	12	-	0.1	9092 0000 01
<b>Regulators</b>								
MINI REG 08K	10	20	-	-	-	-	0.11	9092 0000 61
<b>Lubricators</b>								
MINI DIM 08K	9	23	Polycarbonate	-	-	35	0.09	9092 0000 91
<b>Filter/regulator</b>								
MINI F/R 08K	12	17	Polycarbonate	Manual	12	-	0.12	9092 0001 21
<b>Filter/regulator+lubricator</b>								
MINI F/RD 08K	9	14	Polycarbonate	Manual	12	35	0.32	9092 0001 51

**NOTE:** **Economical air flow:** 8 bar inlet pressure, 6.3 bar outlet pressure, 0.2 bar pressure drop.

**Maximum air flow:** 10 bar inlet pressure, 6.3 bar outlet pressure, 1 bar pressure drop.

Not to be used with pulse tools.

All separate units, mounting brackets, assembly kits and pressure gauges need to be ordered separately. MINI-K F/RD unit is delivered complete with mounting bracket, assembly kit and pressure gauge.

## Optional Accessories

### COMMON ACCESSORIES

Designation	Ordering No.			
	MINI-K	MINI-B	MIDI OPTIMIZER	MAXI-B
<b>Mounting bracket kit</b>	9090 1902 00	9092 0063 01	9093 0022 01	9093 0076 15
<b>Assembly kit</b>	9090 1901 90	9092 0062 71	9093 0022 02	9093 0076 31

Are included in combination units (FD, FTD, F/RD and FRD)  
Common accessories have to be ordered separately for separate units.

### FILTER (FIL) ACCESSORIES (30 µm filter element is included with all filters)

Designation	Ordering No.			
	MINI-K	MINI-B	MIDI OPTIMIZER	MAXI-B
<b>Filter element</b>				
30 µm	9090 1898 00	9092 0063 31	9093 0023 04	9093 0076 61
5 µm		9092 0063 61	9093 0023 05	9093 0076 71
<b>Bowl guard</b>		9092 0063 91		

### REGULATOR (REG) ACCESSORIES

Designation	Ordering No.			
	MINI-K	MINI-B	MIDI OPTIMIZER	MAXI-B
<b>Pressure gauge</b>				
0-10 bar				
Ø 40 mm	9090 1907 00	9090 1907 00		
Ø 50 mm		9090 1172 00	9090 2052 00	
Metal housing			9090 2052 01	
0-16 bar				
Ø 49 mm			9090 0239 00	9090 0239 00
Ø 50 mm		9090 1657 00		
<b>Panel mounting pressure gauge</b>				
0-10 bar				
Ø 50 mm		9090 1173 00	9090 1173 00	
<b>Key lock for regulator -LP</b>		9092 0074 11	9092 0074 11	9092 0074 11

Pressure gauge 0-10 bar is included in the combination units (F/RD and FRD)  
Pressure gauge has to be ordered separately for separate units.

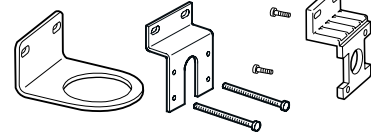
### LUBRICATOR (DIM) ACCESSORIES

Designation	Ordering No.				
	MINI-K	MINI-B	MIDI Optimizer		MAXI-B
			MIDI 1/2"	MIDI 3/4"	
<b>Air distribution block kit</b>	9090 1900 90	9092 0064 51	9093 0022 03	9093 0022 04	9093 0076 41
<b>Bowl guard</b>		9092 0063 91			
<b>Glass sight dome</b>		9090 1121 00			

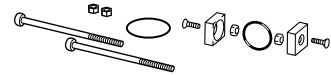
### FRL STAND

Designation	Ordering No.
FRL-Stand - suits all models	9090 2101 00
FRL-Stand kit	9090 3030 02
FRL-Stand MAXI BSP	9090 3030 04
FRL-Stand MIDI BSP	9090 3030 06

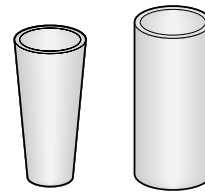
Mounting bracket kit



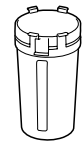
Assembly kit



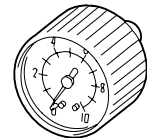
Filter element



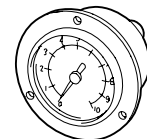
Bowl guard



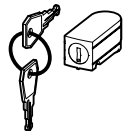
Pressure gauge



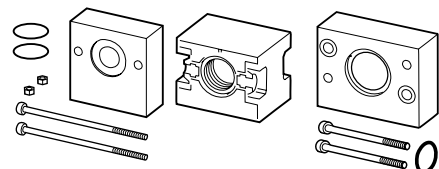
Panel mounting pressure gauge



Key locks for regulator -LP



Air distribution block kit



Glas sight dome



FRL stand

