

Get maximum productivity from your tools

Atlas Copco air preparation units are designed to help you get maximum productivity from your tools. They ensure minimal pressure drop and thus minimum energy losses in the air distribution system, benefiting the environment and cutting your operating costs. The lifetimes of your tools will be extended by using air preparation units and with that comes lower repair costs and less downtime. A correct air installation ensures productivity and good total economy.

FILTER – FIL

Water and dirt in your compressed air system will cause extensive corrosion damage and wear.

Productivity

Atlas Copco filters are equipped with a cyclone system. Using centrifugal force, this separates out a high percentage of the heavier solid water particles, while the filter ensures that the amount of dirt entering your tool is kept to a minimum. This means longer working cycles for the tools and minimum service time.

REGULATOR – REG

Atlas Copco regulators ensure optimal flow at the specific flow rates required by Atlas Copco tools, or any other pneumatic tools.

Energy efficiency

By installing a regulator you will ensure that there will not be any unnecessary consumption of compressed air. The regulators reduce a variable primary pressure to a practically constant secondary pressure with a minimum of pressure drop.

Productivity

The regulator will optimize the performance of your tool, ensure torque accuracy and boost productivity.

LUBRICATOR – DIM

Atlas Copco oil lubricators ensure a long, efficient and trouble-free life for your pneumatic tools and components.

Productivity

The use of a lubricator will increase the power in vane motors by about 10-15%.

Energy efficiency

With the use of a lubricator you will prolong the lifetime of a vane motor up to three times and the motor will work much more efficiently, and with less friction.



Filter – FIL



Regulator – REG



Lubricator – DIM

Air preparation unit MINI-B's main application is to prepare the air for pneumatic components and tools with low air consumption. MINI-B has a 1/4" BSP connection thread and the housing is made of diecast zinc. The bowls are made of polycarbonate or the unit has metal bowls in zinc.



WORKING TEMPERATURE

0°C to +50°C at 10 bar

OPERATING PRESSURE

Inlet pressure 0-16 bar

Outlet pressure 0.5-8 bar

STANDARD FILTER

30 µm

PRESSURE GAUGE

1/8" BSP

Model	Economical air flow l/s	Maximum air flow l/s	Bowl	Filter condensate drainage	Max condensate capacity cm ³	Max oil capacity cm ³	Weight kg	Ordering No.
Filters								
MINI FIL 08B-B	12	24	Polycarbonate	Semi/automatic	22	-	0.25	9093 0032 11
MINI FIL 08B-C	12	24	Polycarbonate	Manual	22	-	0.25	9093 0032 41
MINI FIL 08B-D	13	24	Metal	Manual	22	-	0.25	9093 0032 71
Regulators								
MINI REG 08B	9	47.5	-	-	-	-	0.30	9093 0033 01
MINI REG 08P	8	47.5	-	-	-	-	0.30	9093 0000 31
Lubricators								
MINI DIM 08B	12	23	Polycarbonate	-	-	45	0.25	9093 0033 31
MINI DIM 08B-D	12	23	Metal	-	-	45	0.25	9093 0033 61
Filter/regulator								
MINI F/R 08B-B	9	38	Polycarbonate	Semi/automatic	22	-	0.35	9093 0033 91
MINI F/R 08B-C	9	38	Polycarbonate	Manual	22	-	0.35	9093 0034 21
Filter/regulator+lubricator								
MINI F/RD 08B-B	9	14.8	Polycarbonate	Semi/automatic	22	45	0.75	9093 0034 51
MINI F/RD 08B-C	9	14.8	Polycarbonate	Manual	22	45	0.75	9093 0034 81
Filter+regulator+lubricator								
MINI FRD 08B-B	9	13.8	Polycarbonate	Semi/automatic	22	45	0.95	9093 0062 11
MINI FRD 08B-C	9	13.8	Polycarbonate	Manual	22	45	0.95	9093 0062 41

NOTE: **Economical air flow:** 8 bar inlet pressure, 6.3 bar outlet pressure, 0.2 bar pressure drop.

Maximum air flow: 10 bar inlet pressure, 6.3 bar outlet pressure, 1 bar pressure drop.

Not to be used with pulse tools.

All separate units, mounting brackets, assembly kits and pressure gauges need to be ordered separately. The MINI F/RD and FRD units are delivered complete with mounting bracket, assembly kit and pressure gauge.

Optional Accessories

COMMON ACCESSORIES

Designation	Ordering No.			
	MINI-K	MINI-B	MIDI OPTIMIZER	MAXI-B
Mounting bracket kit	9090 1902 00	9092 0063 01	9093 0022 01	9093 0076 15
Assembly kit	9090 1901 90	9092 0062 71	9093 0022 02	9093 0076 31

Are included in combination units (FD, FTD, F/RD and FRD)

Common accessories have to be ordered separately for separate units.

FILTER (FIL) ACCESSORIES (30 µm filter element is included with all filters)

Designation	Ordering No.			
	MINI-K	MINI-B	MIDI OPTIMIZER	MAXI-B
Filter element				
30 µm	9090 1898 00	9092 0063 31	9093 0023 04	9093 0076 61
5 µm		9092 0063 61	9093 0023 05	9093 0076 71
Bowl guard		9092 0063 91		

REGULATOR (REG) ACCESSORIES

Designation	Ordering No.			
	MINI-K	MINI-B	MIDI OPTIMIZER	MAXI-B
Pressure gauge				
0-10 bar				
Ø 40 mm	9090 1907 00	9090 1907 00		
Ø 50 mm		9090 1172 00	9090 2052 00	
Metal housing			9090 2052 01	
0-16 bar				
Ø 49 mm			9090 0239 00	9090 0239 00
Ø 50 mm		9090 1657 00		
Panel mounting pressure gauge				
0-10 bar				
Ø 50 mm		9090 1173 00	9090 1173 00	
Key lock for regulator -LP		9092 0074 11	9092 0074 11	9092 0074 11

Pressure gauge 0-10 bar is included in the combination units (F/RD and FRD)

Pressure gauge has to be ordered separately for separate units.

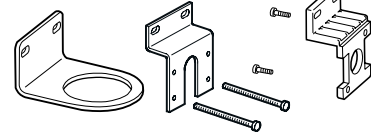
LUBRICATOR (DIM) ACCESSORIES

Designation	Ordering No.				
	MINI-K	MINI-B	MIDI Optimizer		MAXI-B
			MIDI 1/2"	MIDI 3/4"	
Air distribution block kit	9090 1900 90	9092 0064 51	9093 0022 03	9093 0022 04	9093 0076 41
Bowl guard		9092 0063 91			
Glass sight dome		9090 1121 00			

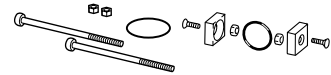
FRL STAND

Designation	Ordering No.
FRL-Stand - suits all models	9090 2101 00
FRL-Stand kit	9090 3030 02
FRL-Stand MAXI BSP	9090 3030 04
FRL-Stand MIDI BSP	9090 3030 06

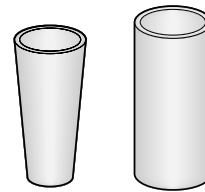
Mounting bracket kit



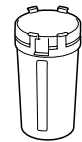
Assembly kit



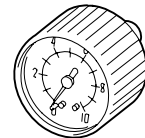
Filter element



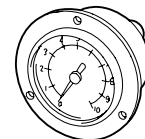
Bowl guard



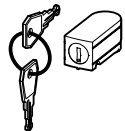
Pressure gauge



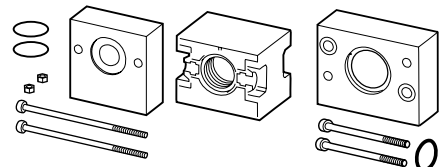
Panel mounting pressure gauge



Key locks for regulator -LP



Air distribution block kit



Glas sight dome



FRL stand

